

Level 1
29 B Anderson Street
Templestowe, VIC 3106
Tel: +61 3 9846 3883
Mob: +61 438 888 009

Apartment 305

AUD \$1,150,000

VOLUME

Malvern East

FEATURES

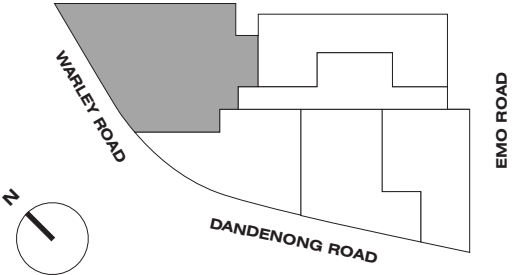
3
Bedroom

2
Car Space

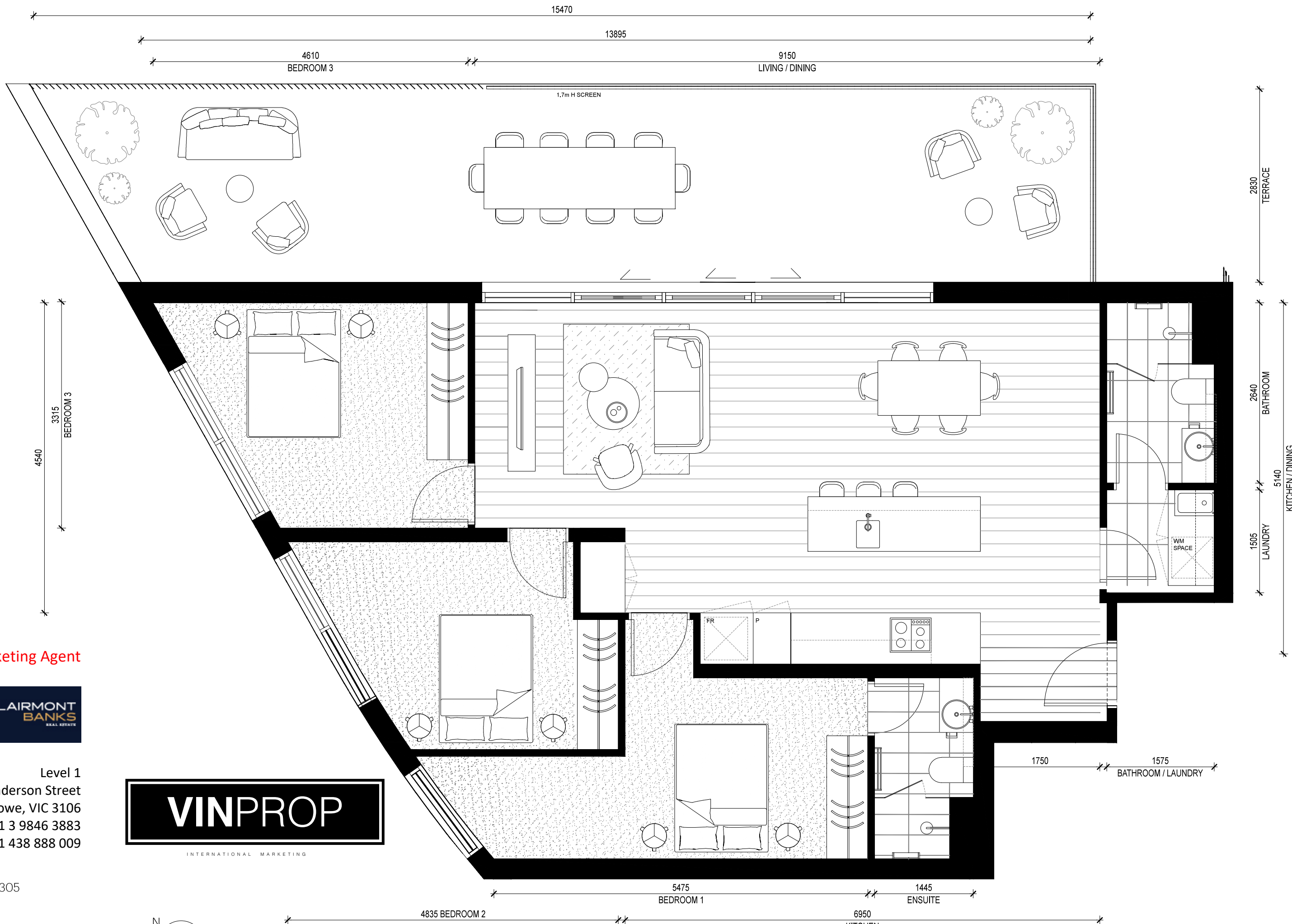
2
Bathroom

1
Storage Space

Apartment	Terrace	Total
107.9 M ²	43.8 M ²	151.7 M ²



The information provided is illustrative only and should not be relied upon. The dimensions and areas are approximate and may not accurately represent the actual dimensions and areas of the external spaces and apartments or the spaces within them and are subject to change without notice. The areas are measured in accordance with the Property Council of Australia method of measurement, which may be different to the method of measurement adopted in the plan of subdivision. Prospective purchasers must refer to the contract of sale and its schedules for all matters to be included in the purchase price of the apartment. Planters, loose furniture and joineries (including study desks, key holders, entertainment units and consoles) are not included.



Marketing Agent

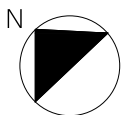


Level 1
29 B Anderson Street
Templestowe, VIC 3106
Tel: +61 3 9846 3883
Mob: +61 438 888 009



Title
APARTMENT 305

Scale
1:50 @ A3



These plans show indicative apartment layouts as at March 2017. Any furniture shown in these plans is not included and shown for illustrative purposes only. The seller, its related companies and agents do not make any warranty as to the accuracy of these preliminary plans, nor that they will not change. Purchasers should note that the seller is permitted to make changes to the preliminary plans at any time before construction is complete. Purchasers should refer to the contract of sale for full details.